

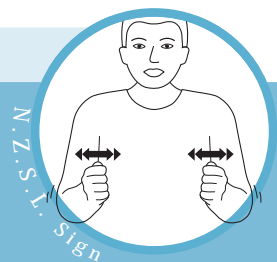
Adjective cards

This set of twenty contemporary colour cards which focus on elementary adjectives. Each card has the target adjective and NZSL sign as well as a photograph and sentence that demonstrates the use of the word in context. This visual resource has been designed to support students working at level two of the English Matrices.

The adjective cards have been designed to follow on from the VADEC adjective grammar fans that cover: colour, size, shape and number.

The specific adjectives are: beautiful, cold, dark, dirty, dry, full, hard, heavy, hot, hungry, lazy, long, new, old, tasty, soft, warm, wet, ugly and yummy.

cold



The ice block is cold.

hungry



By lunch time I am hungry.

Cat. 290
Price \$5

To order:

go to resource list in 'Online Shop' drop-down menu > 'Literacy Resources'