

Today we will cover

What the Boards have been asked to consult on
Why the Minister has made the proposal
The history of the discussion
The current and proposed situation
Your views

Two Boards of Trustees met 27th May



Van Asch Board

Dyanne Bensley
Bernie Mulcahy-Bouwman
Royce Flynn
Claire Raisin
Marie O'Brien
Joyce Ferguson
Joy Creet
Stephanie Rathgen
Alison Attwell
Katherine Hickson

KDEC Board

Dave Thomas
David Foster
Leah Petersen
Jo Studer
Eric Coppage
Rhian Yates
Chris Blum
Michelle Keenan
Glenn Dillon
Gabiella Orellana

Minister of Education – Anne Tolley

Wrote to the
Boards in
February.

*Her letter arrived the
same day as the
Christchurch Earthquake*



Office of Hon Anne Tolley

MP for East Coast
Minister of Education
Minister Responsible for the Education Review Office

17 FEB 2011

Mr Dave Thomas
Board Chair
Kelston Deaf Education Centre
3 Archibald Road
New Lyn
Auckland

31 January 2011

Dear Dave Thomas

I am writing to you to advise you of changes the Government is proposing to make in relation to the provision of deaf education services.

Firstly, I would like to thank you for your Board's continued dedication to meeting the education needs of deaf and hearing impaired children across New Zealand. I also wish to thank you for your commitment to working with the Deaf community, parents and the Ministry of Education, through the Deaf Education Steering Group, to find ways to improve the provision of deaf education services.

I am proposing that the boards of trustees of Kelston and van Asch Deaf Education Centres be combined. This would result in a single board of trustees governing two schools. The change would be at the governance level and not result in any immediate change to each school or to staff. I also propose that the members of the new board be ministerially appointed after calls for expressions of interest.

This proposal follows consideration of the feedback from the deaf education sector over time, including responses to the Review of Special Education and to the Deaf Education Discussion Paper, and the work of the Deaf Education Steering Group.

There are significant challenges in the provision of deaf education services, including meeting the increasingly diverse needs of a small, high dispersed population through small, highly specialised workforces and, meeting a growing trend for outreach services as the majority of students are now enrolled in their local schools.

I believe one board with ministerial appointed trustees would;

- increase opportunities for communication and sharing knowledge and skills between the Deaf Education Centres
- allow for flexible use of resourcing to meet demographic changes in the deaf and hearing impaired student population
- maximise the Review of Special Education Initiative for sensory schools to provide more flexible services for ORRS verified students
- set a national approach to service provision
- ensure the perspectives of the key stakeholders are represented well
- assure governance arrangements best suit the service provider roles of the Deaf Education Centres.

Ministry of Education officials will be meeting with you shortly. They will be able to provide you with more information and discuss with you any questions you have.

Private Bag 18041, Parliament Buildings, Wellington 6160, New Zealand. Telephone 64 4 817 6807 Facsimile 64 4 817 6507



2

Before I make final decisions about this proposal I will want to hear from your Board and from your community. Your Board will therefore need to undertake consultation with your community on this proposal.

I look forward to hearing your Board's and your community's views on the proposal no later than 1 May 2011.

Yours sincerely

Hon Anne Tolley
Minister of Education

cc Mrs D Bensley, Board Chair van Asch Deaf Education Centre

What the Boards have been asked to consult on

Minister's letter proposes that:

- The boards of trustees of Kelston and van Asch Deaf Education Centres be combined. This would result in a single board of trustees governing two schools.
- The change would be at the governance level and would not result in any immediate change to each school or to staff
- The members of the new board be appointed by the Minister after calls for expressions of interest

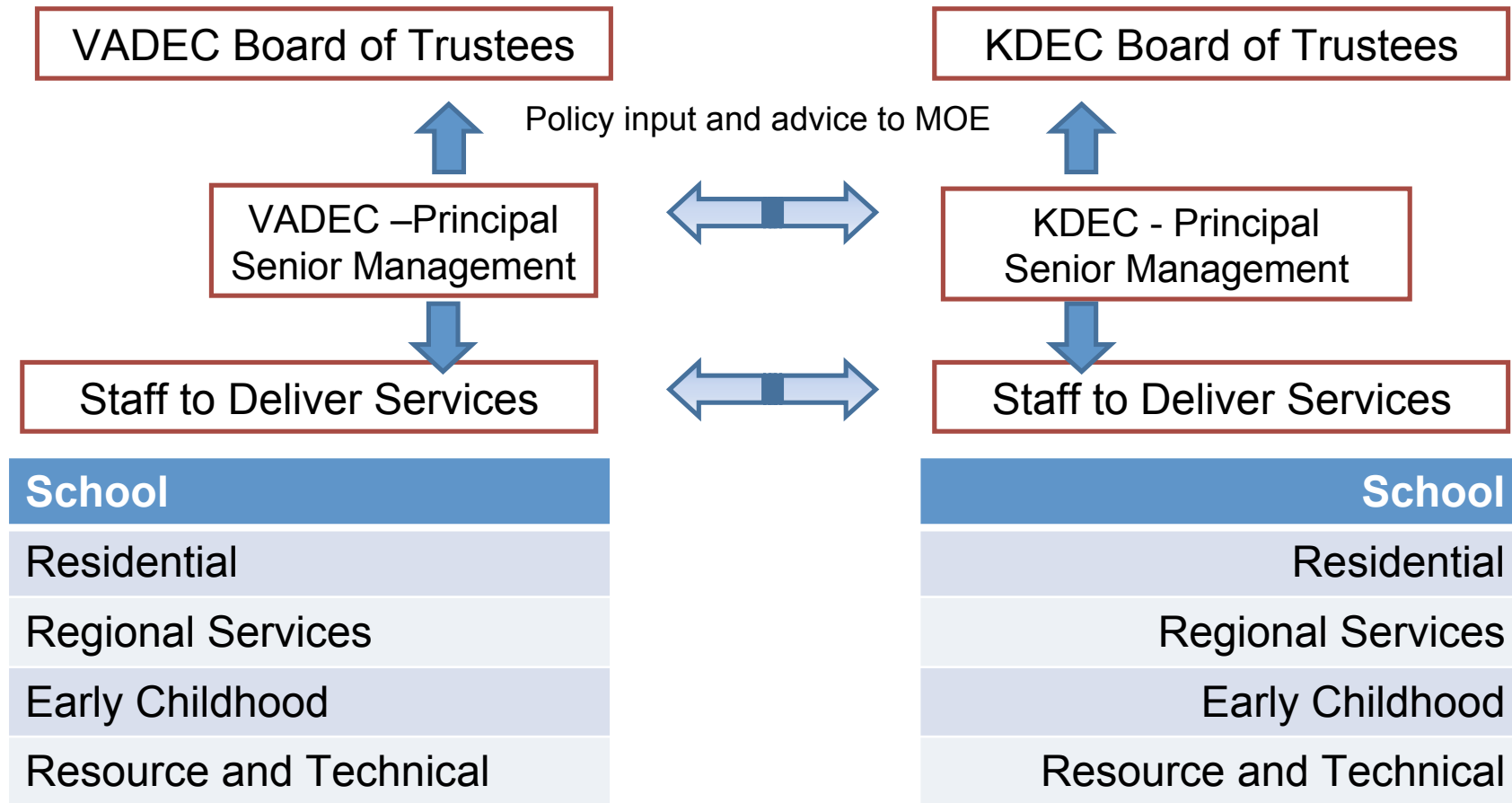
Why the Minister made the proposal

1. Increase opportunities for communication and sharing knowledge and skills between the Deaf Education Centres
2. Allow for flexible use of resourcing to meet demographic changes in the deaf and hearing impaired student population
3. Maximise the Review of Special Education initiative for sensory schools to provide more flexible services for ORS verified students
4. Set a national approach to service provision
5. Ensure perspectives of the key stakeholders are represented well
6. Assure governance arrangements best suit the service provider roles of the Deaf Education Centres

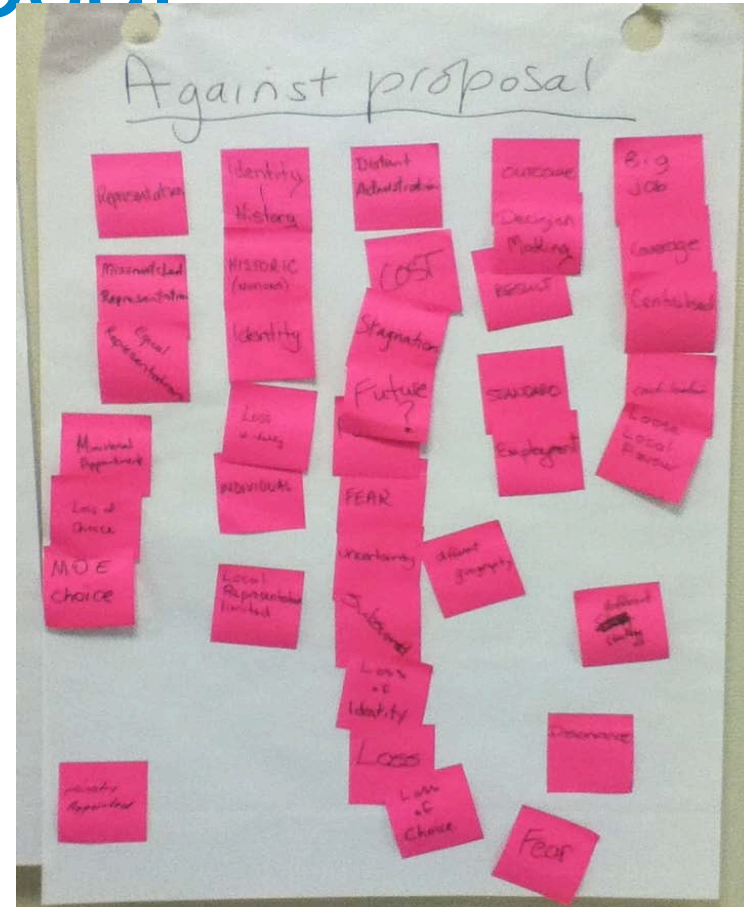
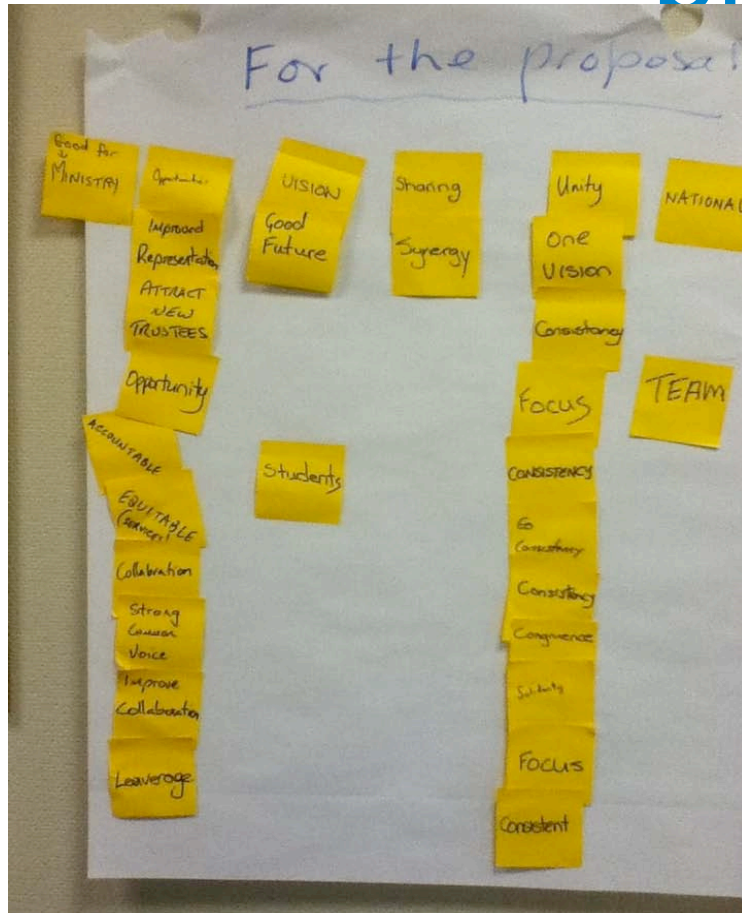
History of Discussion

- ***National Plan*** – Principle 3
- ***The Way Forward*** – called for national coordination
- ***Deaf Education Discussion Document*** – asked about future governance
- ***Special Education Review*** – has given more responsibility to the DEC's

Current Situation:



The Boards discussed the proposal



Proposed Future Situation

One National Board of Trustees

Advantages, (Pros), Opportunities

Shared vision for NZ

Consistent services in NZ

Improved collaboration

Clear Focus for future

Unity and a strong common voice

No election process required

All students / families represented

Disadvantages, (Cons), Risks

Loss of history and identity

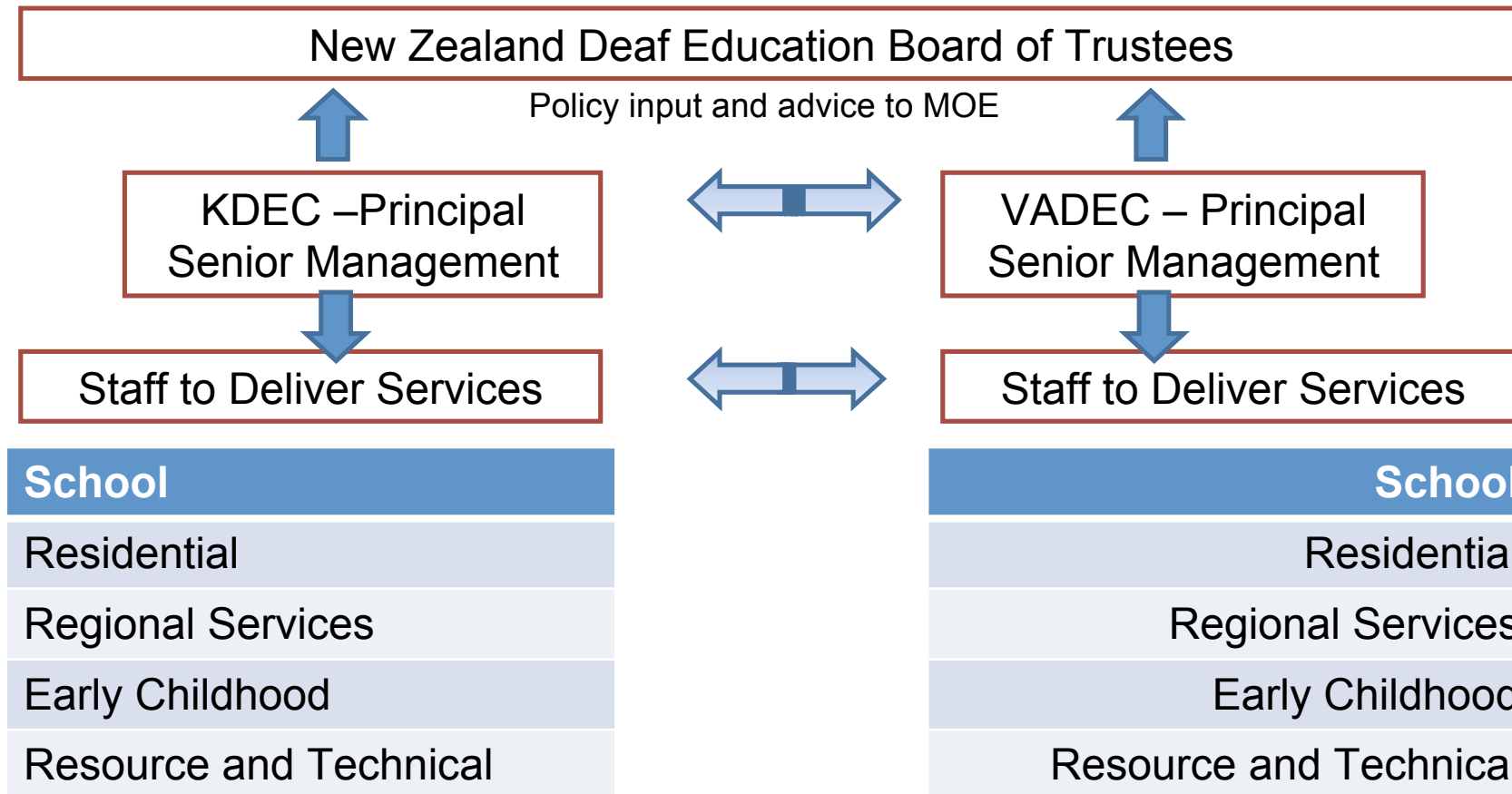
Minister appoints trustees (control)

Loss of local flavour and decisions

Future employment risks

Parents do not get to vote representatives

Proposed Future Situation:



Discussion Questions

- Your views on the three parts of the proposal?
 - A single board for both Deaf Education Centres
 - No immediate change to the schools
 - Minister appoints the Board of Trustees

What might you gain? What might you keep? What might you lose?

Discussion Questions Continued

- How can either the current or new model:
Ensure perspectives of the key stakeholders are represented well

Your Views

Recorded after discussion of the questions:

- 1
- 2
- 3
- 4
- 5

Agreed Summary of Views

- << this slides provides assurance that this is the intention of the meeting>>

Reporting Back to Boards and MOE

Van Asch Board

Palmerston North
New Plymouth
Hastings
Gisborne
Wellington
Christchurch
Nelson/Marlborough
/West Coast
South Canterbury
Otago
Southland

KDEC Board

Whangarei – Manaia View
Kaikohe – Kaikohe East
North Shore – Oteha Valley
West Auckland - KDEC
South Auckland – Anton Centre
Hamilton - Hamilton West School
Tauranga – Tauranga Primary
School
Rotorua – Primary School
Turangi / Taupo

Reporting Back to Boards and MOE

The timeline for feedback:

- 15th August feedback closes
 - 22nd VADEC Board meets
 - 25th KDEC Board meets
- Response to Minister and copied to community by end of Term 3